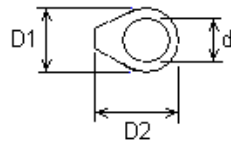
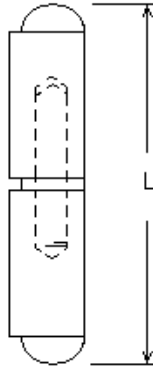




Hinges
Hardware
& Mixers



Code no. 10
WELD-ON BARREL HINGES
With round head, fixed pin

Options

- Hinge Material steel, stainless steel Grade 304 (ST/ST) and Grade 316
- Pin & Washer Material steel, brass, stainless steel
- Grease Nipple with or without

Code	Length = L	Cross Section = D1 / D2	Pin dia = d	Hinge Material	Pin Material	Grease Nipple	Weight /100sets (kg)
10-060	60	10/12	6	Steel	Steel	No	3.6
10-060BP	60	10/12	6	Steel	Brass	No	3.6
10-060SP	60	10/12	6	Steel	ST/ST	No	3.6
10-060STST	60	10/12	6	ST/ST	ST/ST	No	3.6
10-070	70	10/12	6	Steel	Steel	No	4.6
10-070BP	70	10/12	6	Steel	Brass	No	4.6
10-070SP	70	10/12	6	Steel	ST/ST	No	4.6
10-080	80	13/16	8	Steel	Steel	No	8.3
10-080/GN	80	13/16	8	Steel	Steel	Yes	8.3
10-080BP	80	13/16	8	Steel	Brass	No	8.3
10-080SP	80	13/16	8	Steel	ST/ST	No	8.3
10-080STST	80	13/16	8	ST/ST Grade 304	ST/ST	No	8.3
10-080ST316	80	13/16	8	ST/ST Grade 316	ST/ST	No	8.3
10-100	100	16/20	10	Steel	Steel	No	16.8
10-100/GN	100	16/20	10	Steel	Steel	Yes	16.8
10-100BP	100	16/20	10	Steel	Brass	No	16.8
10-100SP	100	16/20	10	Steel	ST/ST	No	16.8
10-100SP/GN	100	16/20	10	Steel	ST/ST	Yes	16.8
10-100STST	100	16/20	10	ST/ST Grade 304	ST/ST	No	16.8
10-100ST316	100	16/20	10	ST/ST Grade 316	ST/ST	No	16.8
10-100STBP	100	16/20	10	ST/ST	Brass	No	16.8
10-120	120	16/20	10	Steel	Steel	No	20
10-120/GN	120	16/20	10	Steel	Steel	Yes	20
10-120BP	120	16/20	10	Steel	Brass	No	20
10-120BP/GN	120	16/20	10	Steel	Brass	Yes	20
10-120SP	120	16/20	10	Steel	ST/ST	No	20
10-120SP/GN	120	16/20	10	Steel	ST/ST	Yes	20
10-120STST	120	16/20	10	ST/ST	ST/ST	No	20



Hinges
Hardware
& Mixers

Code	Length = L	Cross Section = D1/D2	Pin dia = d	Hinge Material	Pin Material	Grease Nipple	Weight /100sets (kg)
10-135	135	18/22	12	Steel	Steel	No	29
10-135/GN	135	18/22	12	Steel	Steel	Yes	29
10-135BP	135	18/22	12	Steel	Brass	No	29
10-135BP/GN	135	18/22	12	Steel	Brass	Yes	29
10-135SP	135	18/22	12	Steel	ST/ST	No	29
10-135SP/GN	135	18/22	12	Steel	ST/ST	Yes	29
10-135STST	135	18/22	12	ST/ST	ST/ST	No	29
10-150	150	20/25	13	Steel	Steel	No	39
10-150/GN	150	20/25	13	Steel	Steel	Yes	39
10-150BP	150	20/25	13	Steel	Brass	No	39
10-150BP/GN	150	20/25	13	Steel	Brass	Yes	39
10-150SP	150	20/25	13	Steel	ST/ST	No	39
10-150SP/GN	150	20/25	13	Steel	ST/ST	Yes	39
10-150STST	150	20/25	13	ST/ST Grade 304	ST/ST	No	39
10-150ST316	150	20/25	13	ST/ST Grade 316	ST/ST	No	39
10-180	180	20/25	13	Steel	Steel	No	48
10-180/GN	180	20/25	13	Steel	Steel	Yes	48
10-180BP	180	20/25	13	Steel	Brass	No	48
10-180BP/GN	180	20/25	13	Steel	Brass	Yes	48
10-180SP	180	20/25	13	Steel	ST/ST	No	48
10-180SP/GN	180	20/25	13	Steel	ST/ST	Yes	48
10-180STST	180	20/25	13	ST/ST	ST/ST	No	48
10-200	200	23/29	16	Steel	Steel	No	71
10-200/GN	200	23/29	16	Steel	Steel	Yes	71
10-200BP	200	23/29	16	Steel	Brass	No	71
10-200BP/GN	200	23/29	16	Steel	Brass	Yes	71
10-200SP	200	23/29	16	Steel	ST/ST	No	71
10-200SP/GN	200	23/29	16	Steel	ST/ST	Yes	71
10-200STST	200	23/29	16	ST/ST Grade 304	ST/ST	No	71
10-200ST316	200	23/29	16	ST/ST Grade 316	ST/ST	No	71
10-260	260	28/37	19	Steel	Steel	No	110
10-260/GN	260	28/37	19	Steel	Steel	Yes	110
10-260BP	260	28/37	19	Steel	Brass	No	110
10-260BP/GN	260	28/37	19	Steel	Brass	Yes	110

Dimensions in mm