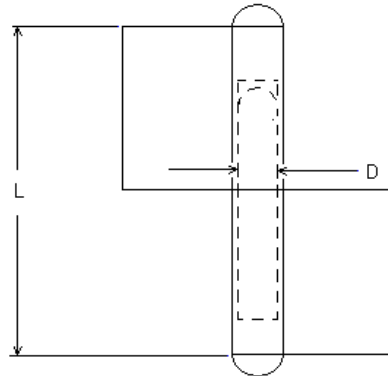


CALMORE

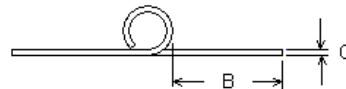
Hinges
Hardware
& Mixers



LEFT HAND HINGE



RIGHT HAND HINGE



Code no. 17-000

ROLLED FLAG HINGES

Fixed pin, 2 part rolled steel hinges with round end caps and brass washer
Self colour, no holes
Hinges are handed

Options

- Hinge Material steel, stainless steel
- Pin Material steel, stainless steel, brass

Code	Length = L	Width = B	Thickness = C	Pin dia = D	Pin Material *Note	Weight/ 100sets (kg)
17-000A	80	30	3	10	Steel	18
17-000ASP	80	30	3	10	Stainless steel	18
17-000AST	80	30	3	10	*hinge is fully in stainless steel	18
17-000AB	80	30	3	10	Brass	18
17-000B	100	30	3	10	Steel	23
17-000BSP	100	30	3	10	Stainless steel	23
17-000BST	100	30	3	10	*hinge is fully in stainless steel	23
17-000BB	100	30	3	10	Brass	23

Dimensions in mm