



Hinges
Hardware
& Mixers



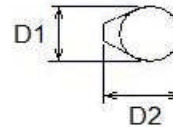
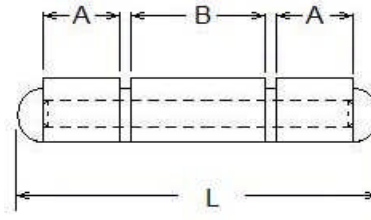
55-070A



55-140B

Code no. 55
WELD-ON BARREL HINGES
Compact hinge in mild steel
with loose floating stainless steel pin

- Options
- Hinge parts 2 or 3 parts
 - Material steel, stainless steel
 - Grease Nipple with or without



Code	Length = L	Cross Section = D1/D2	Outer Part = A	Inner Part = B	Pin dia = d	Grease Nipple	Weight /100sets (kg)
55-060A	60	18/22			12	No	14
55-060B	60	18/22			12	Yes	14
55-070A	70	20/25			13	No	20
55-070B	70	20/25			13	Yes	20
55-100A	100	23/29			16	No	28
55-100B	100	23/29			16	Yes	28
55-120A	120	18/22	35	46	12	No	35
55-120B	120	20/22	35	46	12	Yes	35
55-140A	140	20/25	40.5	53	13	No	36
55-140B	140	20/25	40.5	53	13	Yes	36
55-200A	200	23/29	52.5	89	16	No	71
55-200B	200	23/29	52.5	89	16	Yes	71

Dimensions in mm